



Apple Bolts



Manufacturers & Traders :
NUTS BOLTS AND ALL KIND OF
precision fasteners

BECAUSE | QUALITY | MATTERS

COMPANY PROFILE



Apple Bolts is of a Ludhiana (Punjab) based organized company that was established two decades ago. Apple Bolts is actively involved in manufacturing optimum quality hex head bolts, Nuts and all kind of Precision Fasteners [MS/EN] Series. With the help of our qualified & laborious team of professionals and well developed infrastructure, we have been able to establish ourselves as a prominent metal bolts manufacturer and nut bolt supplier in India. Our company's strength lies in our ability to manufacturing and trading of quality products and along with to deliver the quality products on the committed time period. Our plant is well equipped with very advanced machineries for various operations such as threading, rolling, cold forging. Our company works in close collaboration with the clients and is capable of meeting their ever expanding expectations. We are committed to manufacture and exporters for specific range of hex head bolts & threaded nuts that are close to perfection. Moreover, we always strive hard to provide incomparably high quality industrial hex head bolts to ensure that our relations with our esteemed customers never last.

QUALITY POLICY

We feel proud to state that we have always been able to maintain the quality of our products and are committed to do so in the future too. Our efforts always revolve around providing 100% satisfaction to our clients. The sole objective of our company is to maximize the delight of its customers by satisfying their every type of fastening requirements. To accomplish this we are dedicated to maintain superior quality in our entire production. Our highly motivated team of workers, professionals and managers is capable of successfully dealing with any type of challenge that we might face in our path of progress. Very stringent quality control checks are applied on our products to ensure that they meet the specified standards of quality. We maintain a very disciplined approach towards business ethics. Our products are easy to maintain and are provided at very reasonable prices

INFRASTRUCTURE

Production Capacity : 200 ton Per month
Stock Capacity : 150 to 200 ton always in Stock

Our organization comprises of efficient & experienced managers, marketing representatives, staff members, skilled workforce, which collectively contribute for constant enhancement of the group.

www.applebolts.com



Apple Bolts

Deals in RKF BRAND BOLTS

We Manufactures : 5M, 6M, 8M, 10M, 12M, 1/4", 5/16", 3/8"
HEX HEAD BOLTS & HEX HEAD SCREWS (M.S / E.N Series)

WE ALSO PROVIDE (Trading) hot forged LONG BOLTS 16mm to 52mm diameter, up to
length 350mm (F.T) & 500mm (H.T)

ANY TYPE OF PLATTING HOT DIP, GREEN-WHITE-GOLDEN GALVANIZE NICKEL PLATTING

DEALS IN BEST QUALITY NUTS AND BOLTS

LOOKING FORWARD FOR A LONG LASTING RELATIONSHIP.

UR TRUST AND SATISFACTION IS OUR HAPPINESS

HAVE A HAPPY BUSINESS
ANUJ THAPAR: 9317788888/9023455555

www.applebolts.com

applebolts@in.com, applebolts.com@gmail.com

www.applebolts.com

OUR PRODUCTS



Products We Trade



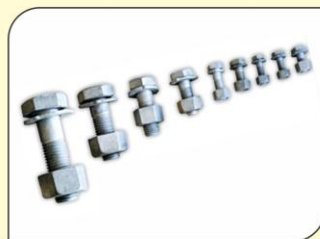
Bolts



Nuts



Washers



Hot Dip Fasteners



Lock Nuts



Spring Washers

www.applebolts.com



OUR PRODUCTS

Products We Trade



Hot Forged Bolts & Nuts



Studs



EN Series High Tensile Bolts



Threaded Rods



Foundation Bolts/Nuts



Anchor Fasteners

www.applebolts.com

M.S HEX FULL THREAD BOLTS ONLY

DIMENSIONS IN INCHES

APPROX COUNT PER 50 KGS.

LENGTH	D I A M E T E R											
	M 1.6	M 2	M 2.5	M 2.6	M 3	M 3.5	M 4	M 5	M 6	M 7	M 8	M 10
3 mm	476190	248756	135135	130548								
4 mm	434782	236966	125000	121065	105263							
5 mm	400000	216450	116279	112866	95238	59523	39682					
6 mm	370370	199203	108695	105708	88495	55555	37593	22935	14705	9208		
8 mm	322580	171821	96153	92081	76335	49019	33557	21008	13368	8431	5847	
10 mm	285714	151057	86206	82918	67114	43859	30487	19011	12254	7776	5494	
12 mm	256410	138504	78125	74294	59880	39682	27777	17421	11312	7225	5102	2604
16 mm		118764	65789	62034	50000	33333	23809	14836	9784	6361	4504	2358
20 mm			56818	53590	42372	28901	20746	12919	8620	5611	4065	2155
25 mm			49019	45871	35714	24630	17857	11135	7518	4950	3597	1945
30 mm							15673	9784	6657	4385	3225	1773
35 mm							14005	8726	5973	3968	2923	1628
40 mm							12626	7874	5417	3597	2673	1506
45 mm							11520	7153	4950	3311	2463	1400
50 mm							10570	6587	4545	3048	2293	1308
55 mm							9765	6090	4201	2840	2136	1228
60 mm							9090	5662	3937	2659	2000	1154
65 mm							8488	5291	3676	2487	1879	1091
70 mm							7961	4950	3472	2347	1773	1035
75 mm								4672	3267	2212	1677	984
80 mm								4424	3086	2100	1592	938
85 mm									2941	1992	1515	896
90 mm									2793	1901	1445	857
100 mm									2550	1736	1326	789
110 mm									2350		1222	730
120 mm									2000		1120	681
130 mm									1900		1040	637
140 mm									1800		980	599
150 mm									1700		930	565
160 mm												555
170 mm												535
180 mm												490
190 mm												
200 mm												450
220 mm												
250 mm												365
260 mm												
280 mm												
300 mm												



www.applebolts.com



M.S HEX FULL THREAD BOLTS ONLY

DIMENSIONS IN INCHES

APPROX COUNT PER 50 KGS.

LENGTH	D I A M E T E R															
	M 12	M 14	M 16	M 18	M 20	M 22	M 24	M 27	M 30	M 33	M 36	M 39	M 42	M 45	M 48	M 52
12 mm	1824															
16 mm	1655															
20 mm	1515															
25 mm	1366	943	712	518	396											
30 mm	1243	863	650	476	367											
35 mm	1141	794	598	442	340	276										
40 mm	1054	736	554	413	318	259	204									
45 mm	980	685	514	387	299	242	193									
50 mm	917	641	485	364	280	228	182	132	100	79						
55 mm	960	603	454	342	265	215	173	125	96	75						
60 mm	810	569	427	324	251	204	164	120	92	72	58	46	39	32	27	22
65 mm	765	538	406	308	239	194	156	114	88	69	55	45	38	31	26	21
70 mm	725	511	384	294	228	185	149	110	84	67	53	43	36	30	25	20
75 mm	689	490	364	280	218	177	143	105	81	64	51	41	35	29	24	20
80 mm	657	467	347	267	208	169	137	101	78	62	50	40	34	28	24	19
85 mm	627	446	333	256	200	162	132	97	75	59	48	39	33	27	23	19
90 mm	600	427	318	246	192	155	127	94	72	57	46	37	32	26	22	18
100 mm	552	393	294	228	177	144	118	87	68	54	43	35	30	25	21	17
110 mm	511	364	271	211	165	134	110	82	64	51	41	33	28	23	20	16
120 mm	476	340	253	198	155	125	103	77	60	48	39	32	27	22	19	16
130 mm	446	318	238	185	145	118	97	72	57	45	37	30	25	21	18	15
140 mm	420	299	223	175	137	111	92	69	54	43	35	28	24	20	17	14
150 mm	396	282	210	166	130	105	87	65	51	41	33	27	23	19	17	14
160 mm	385		198	157	123	100	83	62	49	39	32	26	22	19	16	13
170 mm	360		187	150	117	95	79	59	47	37	30	25	21	18	15	12
180 mm	340		181	143	112	91	74	57	45	35	29	24	20	17	15	12
190 mm	325		172	136	107	87	72	54	43	34	28	23	20	16	14	12
200 mm	310		168	131	103	83	69	52	41	33	27	22	19	16	14	11
225 mm	283		150		93		62		38							
250 mm	250		137		85		57		35							
300 mm	218		114		71		49		30							

www.applebolts.com

M.S HEX FULL THREAD BOLTS WITH NUTS

DIMENSIONS IN INCHES

APPROX COUNT PER 50 KGS.

LENGTH	D I A M E T E R												
	M 2	M 3	M 4	M 5	M 6	M 7	M 8	M 10	M 12	M 14	M 16	M 18	
3 mm	160771												
4 mm	155762	62108											
5 mm	146627	58476	25839										
6 mm	138503	55863	24936	15196	8740	5972							
8 mm	124687	50758	23094	14325	8249	5635	3738						
10 mm	113378	46509	21597	13368	7811	5334	3591						
12 mm	106156	42916	20201	12561	7417	5069	3419	1699	1153				
16 mm	94161	37592	18017	11159	6728	4628	3139	1591	1083				
20 mm		33110	16206	10039	6156	4218	2920	1496	1021				
25 mm		28900	14387	8927	5573	3833	2670	1391	951	648	494	354	
30 mm			12935	8037	5085	3485	2459	1301	890	609	463	333	
35 mm			11777	7309	4676	3216	2279	121	836	574	436	316	
40 mm			10786	6701	4328	2968	2124	1151	788	543	412	301	
45 mm			9969	6172	4024	2770	1989	1088	746	514	389	287	
50 mm			9249	5746	3752	2584	1877	1031	709	489	372	274	
55 mm			8627	5364	3515	2432	1770	981	674	467	354	261	
60 mm			8095	5029	3328	2298	1676	933	643	446	337	251	
65 mm			7614	4734	3139	2169	1590	891	614	427	324	241	
70 mm			7187	4459	2989	2061	1513	854	588	409	310	232	
75 mm				4232	2836	1956	1443	818	564	396	296	223	
80 mm				4027	2698	1868	1379	786	542	380	285	215	
85 mm					2587	1782	1321	756	522	366	275	208	
90 mm					2472	1709	1267	728	503	353	265	201	
100 mm					2279	1574	1175	679	469	330	248	189	
110 mm					2118		1092	634	439	309	231	177	
120 mm					1829		1010	597	412	291	218	167	
130 mm					1745		944	563	390	275	207	158	
140 mm					1660		894	533	370	260	195	150	
150 mm					1575		852	506	351	247	185	144	
160 mm								498	342		175	137	
170 mm								481	322		167	131	
180 mm								444	306		162	126	
190 mm									294		155	120	
200 mm									411		151	116	
225 mm										259	136		
250 mm									339	231	125		
260 mm													
280 mm													
300 mm										203		106	



www.applebolts.com



M.S HEX FULL THREAD BOLTS WITH NUTS

DIMENSIONS IN INCHES

APPROX COUNT PER 50 KGS.

LENGTH	D I A M E T E R											
	M 20	M 22	M 24	M 27	M 30	M 33	M 36	M 39	M 42	M 45	M 48	M 52
12 mm												
16 mm												
20 mm												
25 mm	267											
30 mm	253											
35 mm	240	197										
40 mm	229	188	143									
45 mm	219	179	137									
50 mm	208	171	131	93	69	54						
55 mm	200	163	127	89	67	52						
60 mm	192	157	122	87	65	51	40	31	27		18	
65 mm	185	151	117	83	63	49	38	31	26	21		14
70 mm	178	145	113	81	61	48	37	30			17	
75 mm	172	140	109	78	59	46	36	28	25	20		
80 mm	165	135	106	76	57	45	35	28				
85 mm	160	131	103	74	56	44	34	27	24	19	16	13
90 mm	155	126	100	72	54	43	33	26	23			
100 mm	145	118	94	68	52	41	32	25	22	18	15	12
110 mm	137	111	89	64	49	39	30	24	21	17		
120 mm	130	105	84	61	47	37	29	24	20		14	
130 mm	122	100	80	58	45	35	28	22		16	13	11
140 mm	117	95	76	56	43	34	27	21	19	15		
150 mm	111	90	73	53	41	33	26	20	18			
160 mm	106	87	70	51	39	31	25	20			12	10
170 mm	102	83	67	49	38	30	24	19	17	14		
180 mm	98	80	63	47	37	28	23	19				9
190 mm	94	76	62	45	35	28	22	18	16			
200 mm	91	73	59	44	34	27	22	17	15	13	11	8
225 mm	83		54		32							
250 mm	76		50		29							
300 mm	64		44		26							

www.applebolts.com

M.S HEX HALF THREAD BOLTS ONLY - IS : 1363/67

DIMENSIONS IN INCHES

APPROX COUNT PER 50 KGS.

LENGTH	D I A M E T E R																		
	M 6	M 8	M 10	M 12	M 14	M 16	M 18	M 20	M 22	M 24	M 27	M 30	M 33	M 36	M 39	M 42	M 45	M 48	
25 mm	7000																		
30 mm	6080	3150																	
35 mm	5350	2810	1590																
40 mm	4830	2530	1455	1013															
45 mm	4350	2310	1335	940		506													
50 mm	4000	2120	1235	875	622	470			220	180	127	97	76	62					
55 mm	3700	1960	1145	820	588	437		260	210	170	122	92	73	59					
60 mm	3420	1825	1075	770	550	408	312	244	200	160	116	88	71	57	45				
65 mm	3170	1700	1010	725	500	384	296	230	188	150	111	84	68	54	44				
70 mm	2990	1650	955	687	471	361	276	218	179	142	107	81	65	52	42	35			
75 mm	2820	1535	904	653	448	343	265	207	170	135	103	79	63	49	40	34			
80 mm	2650	1425	853	620	425	325	254	197	162	128	100	75	60	47	38	33	26		
90 mm	2400	1300	780	568	408	296	227	18	148	117	90	70	56	45	36	31	25	22	
100 mm	2200	1190	715	522	367	271	208	166	136	108	83	65	52	42	34	29	24	21	
110 mm	2000	1080	665	461	336	251	196	154	125	100	76	60	48	40	33	27	23	20	
120 mm	1800	972	617	400	305	232	185	143	115	94	72	57	45	38	32	26	22	18	
130 mm	1690	925	578	372	284	217	167	134	109	89	68	54	42	35	29	24	21	17	
140 mm	1585	880	540	345	264	203	150	125	103	85	64	50	40	33	27	23	20	16	
150 mm	1490	860	497	327	252	191	144	118	97	80	61	49	39	32	26	22	19	16	
160 mm	1400		455	310	230	180	138	111	92	76	58	46	37	30	25	21	18	15	
180 mm			430	295	205	162	125	100	83	68	52	41	33	28	23	19	16	14	
200 mm			390	265	185	148	113	91	75	62	48	38	30	25	21	17	15	13	
225 mm			350	245		132		83	68	57	43	35	28	23	19	16	14	12	
250 mm			320	210		120		75	62	51	39	32	25	22	17	15	13	11	
275 mm			290	190		109		69	57	47	37	30	24	20	16	14	12	10	
300 mm				183		101		63	52	43	34	27	23	18	15	13	11	10	



www.applebolts.com



M.S HEX HALF THREAD BOLTS WITH NUTS IS:1363/67 - DIN:601/70 & 555/72 - BS : 4190/67

DIMENSIONS IN INCHES

APPROX COUNT PER 50 KGS.

LENGTH	D I A M E T E R									
	M 5	M 6	M 8	M 10	M 12	M 14	M 16	M 18	M 20	M 22
16 mm	11160	6729	3144	1557						
20 mm	8361	6157	2923	1466	1022					
25 mm	7575	5574	2673	1366	952	612				
30 mm	6784	4950	2415	1278	897	516	467		268	
35 mm	6218	4464	2202	1184	837	500	438	312	255	
40 mm	5675	4065	2024	1103	780	486	413	300	241	
45 mm	5219	3731	1872	1033	729	476	390	290	230	
50 mm	4854	3448	1742	970	685	444	367	280	220	176
55 mm		3205	1628	915	646	430	347	265	210	166
60 mm		2994	1529	866	611	408	328	250	199	156
65 mm		2808	1440	822	580	396	312	238	189	147
70 mm		2645	1362	782	552	385	297	226	180	141
75 mm		2500	1291	746	526	378	284	215	172	128
80 mm		2369	1228	713	500	360	274	204	165	125
90 mm			1118	655	458	335	252	192	151	120
100 mm			1026	606	423	306	233	180	140	108
110 mm				563	393	282	217	160	131	106
120 mm				526	367	266	203	152	122	100
130 mm				495	344	250	190	144	115	95
140 mm				467	324	240	179	140	108	90
150 mm				442	306	225	170	133	103	85
160 mm				420	290	206	161	122	99	81
170 mm				400	276		153		94	77
180 mm				381	263	186	146		90	74
190 mm				364	251		139		86	71
200 mm				349	240	169	133	102	82	68
220 mm				322	221		123		76	63
240 mm				299	204		114		70	59
250 mm				289	197		110		67	57
260 mm				279	190		106		65	55
280 mm				261	178		99		61	51
300 mm				246	167		93		57	48
320 mm					158		88		54	
340 mm					149		83		51	
360 mm					142		79		48	
380 mm					135		75		46	
400 mm					128		72		44	

www.applebolts.com

M.S HEX FULL THREAD BOLTS ONLY

DIMENSIONS IN INCHES

APPROX COUNT PER 50 KGS.

LENGTH	D I A M E T E R													
	3/16"	1/4"	5/16"	3/8"	7/16"	1/2"	5/8"	3/4"	7/8"	1"	1.1/8"	1.1/4"	1.1/2"	2"
1/4"	26200													
3/8"	22600	10000												
1/2"	19300	9000	5500											
5/8"	17600	8000	5000	3250										
3/4"	15700	7300	4470	2950	1785	1240								
1"	13700	6124	3868	2423	1537	1120	640							
1.1/4"	11100	5351	3382	2137	1389	1009	582	365	267					
1.1/2"	9800	4752	3004	1910	1260	917	533	337	245	174				
1.3/4"	9100	4272	2702	1727	1143	841	492	312	226	162				
2"	8200	3882	2455	1577	1053	776	458	291	211	153				
2.1/4"	7300	3556	2251	1451	975	720	427	273	199	144				
2.1/2"	6600	3280	2076	1342	909	672	401	257	187	135		75		
3"	5700	2841	1798	1169	800	592	356	229	167	122	91	70	44	
3.1/2"	5100	2505	1587	1035	715	530	320	207	148	111	82	64		
4"	4600	2240	1418	929	646	479	291	189	140	101	74	59	37	20
4.1/2"		2026	1284	842	589	438	267	173	127	94	69	55		
5"		1852	1174	771	541	403	246	160	116	87	64	51	32	17
6"		1580	1001	658	466	347	214	140	101	76	56	44	29	15
7"				565		300	188	125	89	68		39		
8"				505		268	170	111	80	61		35	23	12
9"				450		245	154	101	73	56		33		
10"				415		223	138	93	67	51		31		10
11"						206	127	85	63	47		28		
12"						189	117	77	59	44		26		



www.applebolts.com



M.S HEX HALF THREAD BOLTS ONLY

DIMENSIONS IN INCHES

APPROX COUNT PER 50 KGS.

LENGTH	D I A M E T E R													
	1/4"	5/16"	3/8"	7/16"	1/2"	5/8"	3/4"	7/8"	1"	1.1/8"	1.1/4"	1.1/2"	1.3/4"	2"
3/4"	6835													
7/8"	6290	3570												
1"	5760	3380	2520											
1.1/4"	4670	2920	2155	1200	965	568								
1.1/2"	4310	2570	1880	1090	862	510	324							
1.3/4"	3825	2290	1665	1000	780	463	303	228						
2"	3430	2075	1495	928	713	423	279	210	149					
2.1/4"	3120	1890	1360	863	655	390	258	194	138					
2.1/2"	2855	1740	1245	807	607	362	240	181	129	98	74	48	33	23
3"	2450	1495	1065	713	530	316	211	159	116	87	66	44	30	21
3.1/2"	2140	1310	930	640	470	281	188	142	102	78	59	40	27	20
4"	1900	1170	825	580	420	251	170	127	93	71	55	37	25	18
4.1/2"	1710	1052	743	530	380	236	160	117	88	65	51	35	23	17
5"	1560	960	675	488	340	216	147	107	78	61	47	31	21	16
6"	1310	813	572	422	305	185	126	91	69	53	40	27	18	14
7"			495		275	163	107	77	61	45	36	24	16	13
8"			438		230	146	99	74	55	41	33	21	15	11
9"			390		215	130	85	65	49	39	30	19	13	10
10"			350		200	115	79	59	44	36	27	18	12	9
11"					179	108	74	54	41	33	25	17	12	9
12"			290		159	101	69	50	38	31	24	16	11	8
14"					139	88	60	44	33	26	21	14	10	7
16"					120	77	53	38	29	23	18	12	9	6
18"					110	69	47	34	26	21	16	11	8	
20"					100	62	42	31	23	19	14	10	7	

www.applebolts.com

DIMENSIONS FOR "PUNCHED WASHERS" TYPE A, IS:2016/67 FOR HEXAGONAL BOLTS AND SCREWS

FOR BOLT OR SCREW SIZE	O.D.	O.D.	THICKNESS
M 1.6	1.8	4	0.4
M 1.8	2.1	5	0.4
M 2	2.4	5	0.4
M 2.2	2.6	6	0.5
M 2.5	2.9	6.5	0.5
M 3	3.4	7	0.5
M 3.5	4	8	0.8
M 4	4.5	9	0.8
M 4.5	5	10	1
M 5	5.5	10	1
M 6	6.6	12.5	1.6
M 7	7.6	14	1.6
M 8	9	17	1.6
M 10	11	21	2
M 12	14	24	2.5
M 14	16	28	2.5
M 16	18	30	3.15
M 18	20	34	3.15
M 20	22	37	3.15
M 22	24	39	3.15
M 24	26	44	4
M 27	30	50	4
M 30	33	56	4
M 33	36	60	5
M 36	39	66	5
M 39	42	72	6
M 42	45	78	6
M 45	48	85	8
M 48	52	92	8
M 52	54	98	8
M 56	58	105	9
M 60	62	110	9
M 64	66	115	9
M 68	70	120	10
M 72	74	125	10

For Washers as per IS : 6610, while ID & OD remain same as above punched washers, but thickness changes to 8mm for all sizes (from 12mm to 39 mm bolt size)

DIMENSIONS FOR "MACHINED WASHERS" - IS:2016/67 FOR HEXAGONAL BOLTS AND SCREWS

FOR BOLT OR SCREW SIZE	O.D.	O.D.	THICKNESS
M 1.6	1.7	4	0.4
M 1.8	2	5	0.4
M 2	2.2	5	0.4
M 2.2	2.4	6	0.5
M 2.5	2.7	6.5	0.5
M 3	3.2	7	0.5
M 3.5	3.7	8	0.8
M 4	4.3	9	0.8
M 4.5	4.8	10	1
M 5	5.3	10	1
M 6	6.4	12.5	1.6
M 7	7.4	14	1.6
M 8	8.4	17	1.6
M 10	10.5	21	2
M 12	13	24	2.5
M 14	15	28	2.5
M 16	17	30	3
M 18	19	34	3
M 20	21	37	3
M 22	23	39	3
M 24	25	44	4
M 27	28	50	4
M 30	31	56	4
M 33	34	60	5
M 36	37	66	5
M 39	40	72	6
M 42	43	78	6
M 45	46	85	7
M 48	50	92	8
M 52	54	98	8
M 56	58	105	9
M 60	62	110	9
M 64	66	115	9
M 68	70	120	10
M 72	74	125	10

DIMENSIONS FOR "PUNCHED WASHERS" TYPE B, IS:2016/67 FOR ROUND AND CHEESE HEAD SCREWS

FOR BOLT OR SCREW SIZE	I.D.	O.D.	THICKNESS
M 1.6	1.8	3.5	0.4
M 1.8	2.1	3.5	0.4
M 2	2.4	4.5	0.4
M 2.2	2.6	4.5	0.5
M 2.5	2.9	5	0.5
M 3	3.4	6	0.5
M 3.5	4	7	0.5
M 4	4.5	8	0.8

FOR BOLT OR SCREW SIZE	I.D.	O.D.	THICKNESS
M 4.5	5	9	0.8
M 5	5.5	9.5	1
M 6	6.6	11	1.6
M 7	7.6	13	2
M 8	9	14	1.6
M 10	11	18	2
M 12	14	20	2.5
M 16	18	27	3.15



www.applebolts.com



www.applebolts.com

NUTS AS PER IS : 1363/67 IS & 3138/66 AND DIN - 555

	Weight in Kgs. per 100 Nos.	No. of pcs. per 50 Kgs.		Weight in Kgs. per 100 Nos.	No. of pcs. per 50 Kgs.
2 mm	0.011	454,550	33 mm	27.100	184
3 mm	0.033	151,500	36 mm	36.900	135
4 mm	0.067	74,075	39 mm	47.200	105
5 mm	0.111	45,045	42 mm	57.400	87
6 mm	0.232	21,551	45 mm	73.000	68
7 mm	0.294	17,000	48 mm	92.400	54
8 mm	0.482	10,373	52 mm	108.000	46
10 mm	1.090	4,587	56 mm	132.000	38
12 mm	1.590	3,144	60 mm	160.000	31
14 mm	2.400	2,083	64 mm	184.000	27
16 mm	3.080	1,623	72 mm	239.000	21
18 mm	4.450	1,124	80 mm	331.000	15
20-mm	6.030	829	90-mm	455.000	11
22 mm	7.150	700	100-mm	634.000	8
24-mm	10.300	485	0BA	0.270	18,5000
27-mm	15.400	324	2BA	0.126	38,7000
30-mm	21600	231			

M.S. HEX NUTS

DIMENSIONS IN INCHES

APPROX. COUNT PER 50 KG.

1.8	5/32	3/16	1/4	5/16	3/8	7/16	1/2	5/8	3/4
1.22.000	94.300	37.600	15.500	9800	6121	3600	2250	1150	696
7.8	1	1.1/8	1.1/4	1.3/8	1.1/2	1.3/4	2	2.1/4	2.1/2
580	385	275	192	132	112	70	61	45	30

DIMENSIONS FOR HEX BOLTS, NUTS & LOCK NUTS

Sr. No.	Basic Dia	Equivalent		Thread	Specification	S H A N K				A/F Of Bolts & Nuts				Bolt Head Thickness				Std. Nut Thickness				Lock Nut Thickness			
		Inch	Metric			Metric		Inch		Metric		Inch		Metric		Inch		Metric		Inch					
						Max	Min	Max	Min	Max	Min	Max	Min	Max	Min	Max	Min	Max	Min	Max	Min				
1	1.6 mm	0.063	1.600	Metric	IS : 1364-83	-	-	-	-	3.200	3.020	0.126	0.119	-	-	-	-	1.300	1.050	0.051	0.041	1.000	0.750	0.039	0.030
2					IS : 1364-92	1.600	1.460	0.063	0.057	3.200	3.020	0.126	0.119	1.225	0.975	0.048	0.038	1.300	1.050	0.051	0.041	1.000	0.750	0.039	0.030
3	10 BA	0.067	1.700	BA	BS : 57-51	-	-	-	-	2.972	2.896	0.117	0.114	1.270	1.168	0.050	0.046	1.626	1.448	0.064	0.057	-	-	-	-
4	2 mm	0.079	2.000	Metric	IS : 1364-83	-	-	-	-	4.000	3.820	0.157	0.150	-	-	-	-	1.600	1.350	0.063	0.053	1.200	0.950	0.047	0.037
5					IS : 1364-92	2.000	1.860	0.079	0.073	4.000	3.820	0.157	0.150	1.525	1.275	0.060	0.050	1.600	1.350	0.063	0.053	1.200	0.950	0.047	0.037
6	2.2 mm	0.087	2.200	Metric	IS : 2389-68	2.200	2.060	0.087	0.081	4.500	4.380	0.177	0.172	1.630	1.380	0.064	0.054	1.800	1.550	0.071	0.061	1.200	0.950	0.047	0.037
7	8 BA	0.087	2.200	BA	BS : 57-51	-	-	-	-	3.861	3.785	0.152	0.149	1.651	1.549	0.065	0.061	2.083	1.905	0.082	0.075	1.473	1.295	0.058	0.051
8	2.5 mm	0.098	2.500	Metric	IS : 1364-83	-	-	-	-	5.000	4.820	0.197	0.190	-	-	-	-	2.000	1.750	0.079	0.069	1.600	1.350	0.063	0.053
9					IS : 1364-92	2.500	2.360	0.098	0.093	5.000	4.820	0.197	0.190	1.825	1.575	0.072	0.062	2.000	1.750	0.079	0.069	1.600	1.350	0.063	0.053
10	6 BA	0.110	2.800	BA	BS : 57-51	-	-	-	-	4.902	4.801	0.193	0.189	2.108	1.981	0.083	0.078	2.667	2.413	0.105	0.095	1.854	1.600	0.073	0.063
11	3 mm	0.118	3.000	Metric	IS : 1364-83	3.000	2.860	0.118	0.112	5.500	5.320	0.216	0.209	2.120	1.880	0.083	0.074	2.400	2.150	0.094	0.085	1.800	1.550	0.071	0.061
12					IS : 1364-92	3.000	2.860	0.118	0.112	5.500	5.320	0.216	0.209	2.125	1.875	0.084	0.074	2.400	2.150	0.094	0.085	1.800	1.550	0.071	0.061
13	1/8"	0.125	3.175	BAW		-	-	-	-	5.588	5.486	0.220	0.216	-	-	-	-	2.921	2.794	0.115	0.110	-	-	-	-
14	3.5 mm	0.138	3.500	Metric	IS : 1364-92	3.500	3.320	0.138	0.131	6.000	5.820	0.236	0.229	2.525	2.275	0.099	0.090	2.800	2.550	0.110	0.110	2.000	1.750	0.079	0.069
15	4 BA	0.142	3.600	BA	BS : 57-51	-	-	-	-	6.299	6.172	0.248	0.243	2.692	2.540	0.106	0.100	3.429	3.175	0.135	0.125	2.388	2.134	0.094	0.084
16	5/32"	0.156	3.969	BSW		-	-	-	-	6.299	6.172	0.248	0.243	-	-	-	-	3.302	3.175	0.130	0.125	-	-	-	-
17	4 mm	0.157	4.000	Metric	IS : 1364-83	4.000	3.820	0.157	0.150	7.000	6.780	0.275	0.267	2.920	2.680	0.115	0.105	3.200	2.900	0.126	0.114	2.200	1.950	0.087	0.077
18					IS : 1364-92	4.000	3.820	0.157	0.150	7.000	6.780	0.275	0.267	2.925	2.675	0.115	0.105	3.200	2.900	0.126	0.114	2.200	1.950	0.087	0.077
19	4.5 mm	0.177	4.500	Metric	IS : 2389-68	4.500	4.320	0.177	0.170	8.000	7.850	0.315	0.309	3.150	2.880	0.124	0.113	3.600	3.300	0.142	0.130	2.300	2.050	0.090	0.081
20	2 BA	0.185	4.700	BA	BS : 57-51	-	-	-	-	8.230	8.103	0.324	0.319	3.531	3.353	0.139	0.132	4.242	3.988	0.167	0.157	3.124	2.870	0.123	0.113

www.applebolts.com

Sr. No.	Basic Dia	Equivalent		Thread	Specification	S H A N K				A/F Of Bolts & Nuts				Bolt Head Thickness				Std. Nut Thickness				Lock Nut Thickness					
		Inch	Metric			Metric		Inch		Metric		Inch		Metric		Inch		Metric		Inch		Metric		Inch			
						Max	Min	Max	Min	Max	Min	Max	Min	Max	Min	Max	Min	Max	Min	Max	Min	Max	Min	Max	Min		
21	3/16"	0.187	4.762	BSW		-	-	-	-	8.230	8.103	0.324	0.319	2.845	2.718	0.112	0.107	4.115	3.937	0.162	0.155	-	-	-	-		
22	5 mm	0.197	5.000	Metric	IS : 1363-84	5.480	4.520	0.216	0.178	8.000	7.640	0.315	0.301	3.875	3.125	0.153	0.123	5.600	4.400	0.220	0.173	-	-	-	-		
23					IS : 1363-92	5.480	4.520	0.216	0.178	8.000	7.640	0.315	0.301	3.875	3.125	0.153	0.123	5.600	4.400	0.220	0.173	-	-	-	-		
24					IS : 1364-83	5.000	4.820	0.197	0.190	8.000	7.780	0.315	0.306	3.650	3.350	0.144	0.132	4.700	4.400	0.185	0.173	2.700	2.450	0.106	0.096	-	-
25					IS : 1364-92	5.000	4.820	0.197	0.190	8.000	7.780	0.315	0.306	3.650	3.350	0.144	0.132	4.700	4.400	0.185	0.173	2.700	2.450	0.106	0.096	-	-
26	0 BA	0.236	6.000	BA	BS : 57-51	-	-	-	-	10.490	10.363	0.413	0.408	4.496	4.293	0.177	0.169	5.410	5.156	0.213	0.203	3.988	3.734	0.157	0.147		
27	6 mm	0.236	6.000	Metric	IS : 1363-67	6.480	5.700	0.255	0.224	10.000	9.640	0.394	0.379	4.380	3.620	0.172	0.142	5.380	4.620	0.212	0.182	3.300	2.700	0.130	0.106		
28					IS : 1363-84	6.480	5.520	0.255	0.217	10.000	9.640	0.394	0.379	4.380	3.620	0.172	0.142	6.100	4.900	0.240	0.193	-	-	-	-		
29					IS : 1363-92	6.480	5.520	0.255	0.217	10.000	9.640	0.394	0.380	4.375	3.625	0.172	0.143	6.100	4.600	0.240	0.181	-	-	-	-		
30					IS : 1364-67	6.000	5.820	0.236	0.229	10.000	9.780	0.394	0.385	4.150	3.850	0.163	0.151	5.000	4.700	0.197	0.185	3.000	2.750	0.118	0.108		
31					IS : 1364-83	6.000	5.820	0.236	0.229	10.000	9.780	0.394	0.385	4.150	3.850	0.163	0.151	5.200	4.900	0.205	0.193	3.200	2.900	0.126	0.114		
32					IS : 1364-92	6.000	5.820	0.236	0.229	10.000	9.780	0.394	0.385	4.150	3.850	0.163	0.151	5.200	4.900	0.205	0.193	3.200	2.900	0.126	0.114		
33	1/4"	0.250	6.350	BSW-BSF	BS : 916-57	7.112	-	0.280	-	11.303	11.049	0.445	0.435	4.724	4.216	0.186	0.166	5.588	5.080	0.220	0.200	4.700	4.570	0.185	0.180		
34					BSW-BSF	BS : 1083-65	6.350	6.248	0.250	0.246	11.303	11.125	0.445	0.438	4.470	4.216	0.176	0.166	5.080	4.826	0.200	0.190	4.089	3.835	0.161	0.151	
35					BSW-BSF	BS : 1768-63	6.350	6.248	0.250	0.246	11.100	10.922	0.437	0.430	4.140	3.886	0.163	0.153	5.690	5.436	0.224	0.214	4.089	3.835	0.161	0.151	
36					UNC-UNF	ANSI	6.604	-	0.260	-	11.125	10.975	0.438	0.425	4.775	3.810	0.188	0.150	5.740	5.385	0.226	0.212	4.166	3.810	0.164	0.150	
37	7 mm	0.275	7.000	Metric	IS : 1363-67	7.580	6.640	0.298	0.261	11.000	10.570	0.433	0.416	5.380	4.620	0.212	0.182	5.880	5.120	0.231	0.201	3.300	2.700	0.130	0.106		
38					IS : 1364-67	7.000	6.780	0.275	0.267	11.000	10.730	0.433	0.422	5.150	4.850	0.203	0.191	6.500	6.200	0.256	0.244	3.000	2.750	0.118	0.108		
39	5/16"	0.312	7.940	BSW-BSF	BS : 916-57	8.687	-	0.342	-	13.335	13.081	0.525	0.515	5.791	5.283	0.228	0.208	6.858	6.350	0.270	0.250	5.334	5.080	0.210	0.200		
40					BSW-BSF	BS : 1083-65	7.925	7.849	0.312	0.309	13.335	13.151	0.525	0.518	5.537	5.283	0.218	0.208	6.350	6.096	0.250	0.240	4.877	4.623	0.192	0.182	
41					BSW-BSF	BS : 1768-63	7.925	7.849	0.312	0.309	12.700	12.522	0.500	0.493	5.359	5.105	0.211	0.201	6.883	6.629	0.271	0.261	4.877	4.623	0.192	0.182	
42					UNC-UNF	ANSI	8.230	-	0.324	-	12.700	12.924	0.500	0.484	5.969	4.953	0.235	0.195	6.934	6.553	0.273	0.258	4.953	4.572	0.195	0.180	
43	8 mm	0.315	8.000	Metric	IS : 1363-67	8.900	7.640	0.350	0.301	13.000	12.570	0.512	0.495	5.880	5.120	0.231	0.201	6.950	6.050	0.274	0.238	4.380	3.620	0.172	0.142		
44					IS : 1363-84	8.580	7.420	0.338	0.292	13.000	12.570	0.512	0.495	5.680	4.920	0.224	0.194	7.900	6.400	0.311	0.252	-	-	-	-		
45					IS : 1363-92	8.580	7.420	0.338	0.292	13.000	12.570	0.512	0.495	5.675	4.925	0.223	0.194	7.900	6.400	0.311	0.252	-	-	-	-		
46					IS : 1364-67	8.000	7.780	0.315	0.306	13.000	12.730	0.512	0.501	5.650	5.350	0.222	0.211	6.500	6.140	0.256	0.242	4.000	3.700	0.157	0.146		
47					IS : 1364-83	8.000	7.780	0.315	0.306	13.000	12.730	0.512	0.501	5.450	5.150	0.214	0.203	6.800	6.440	0.268	0.253	4.000	3.700	0.157	0.146		
48					IS : 1364-92	8.000	7.780	0.315	0.306	13.000	12.730	0.512	0.501	5.450	5.150	0.215	0.203	6.800	6.440	0.268	0.254	4.000	3.700	0.157	0.146		

www.applebolts.com

Sr. No.	Basic Dia	Equivalent		Thread	Specification	S H A N K				A/F Of Bolts & Nuts				Bolt Head Thickness				Std. Nut Thickness				Lock Nut Thickness				
		Inch	Metric			Metric		Inch		Metric		Inch		Metric		Inch		Metric		Inch		Metric		Inch		
						Max	Min	Max	Min	Max	Min	Max	Min	Max	Min	Max	Min	Max	Min	Max	Min	Max	Min	Max	Min	
49	3/8"	0.375	9.525	BSW-BSF	BS : 916-57	10.287	-	0.405	-	15.240	14.859	0.600	0.585	6.858	6.350	0.270	0.250	8.433	7.925	0.332	0.312	6.604	6.350	0.260	0.250	
50					BSW-BSF	BS : 1083-65	9.525	9.423	0.375	0.371	15.240	15.037	0.600	0.592	6.604	6.350	0.260	0.250	7.925	7.671	0.312	0.302	5.690	5.436	0.224	0.214
51					UNC-UNF	BS : 1768-63	9.525	9.423	0.375	0.371	14.275	14.072	0.562	0.554	6.172	5.918	0.243	0.233	8.458	8.204	0.333	0.323	5.690	5.436	0.224	0.214
52					UNC-UNF	ANSI	9.855	-	0.388	-	14.275	13.818	0.562	0.544	6.807	5.740	0.268	0.226	8.560	8.128	0.337	0.320	5.766	5.334	0.227	0.210
53	10mm	0.394	10.000	Metric	IS : 1363-67	10.900	9.640	0.429	0.379	17.000	16.570	0.669	0.652	7.450	6.550	0.293	0.258	8.450	7.550	0.333	0.297	5.380	4.620	0.212	0.182	
54					IS : 1363-84	10.580	9.420	0.416	0.371	16.000	15.570	0.630	0.613	6.850	5.950	0.270	0.234	9.500	8.000	0.374	0.315	-	-	-	-	
55					IS : 1363-92	10.580	9.420	0.416	0.371	16.000	15.570	0.630	0.613	6.850	5.950	0.270	0.234	9.500	8.000	0.374	0.315	-	-	-	-	
56					IS : 1364-67	10.000	9.780	0.394	0.385	17.000	16.730	0.669	0.659	7.180	6.820	0.283	0.268	8.000	7.640	0.315	0.301	5.000	4.700	0.197	0.185	
57					IS : 1364-84	10.000	9.780	0.394	0.385	16.000	15.730	0.630	0.619	6.580	6.220	0.259	0.245	8.400	8.040	0.331	0.316	5.000	4.700	0.197	0.185	
58					IS : 1364-92	10.000	9.780	0.394	0.385	16.000	15.730	0.630	0.619	6.580	6.220	0.259	0.245	8.400	8.040	0.331	0.317	5.000	4.700	0.197	0.185	
59	7/16"	0.437	11.112	BSW-BSF	BS : 916-57	11.887	-	0.468	-	18.034	17.653	0.710	0.695	7.925	7.417	0.312	0.292	10.033	9.525	0.395	0.375	6.985	6.731	0.275	0.265	
60					BSW-BSF	BS : 1083-65	11.100	10.998	0.437	0.433	18.034	17.831	0.710	0.702	7.671	7.417	0.302	0.292	9.525	9.271	0.375	0.365	6.350	6.096	0.250	0.240
61					BSW-BSF	BS : 1768-63	11.100	10.998	0.437	0.433	15.875	15.672	0.625	0.617	7.391	7.137	0.291	0.281	9.652	9.398	0.380	0.370	6.477	6.223	0.255	0.245
62					UNC-UNF	ANSI	11.481	-	0.452	-	15.875	15.316	0.625	0.603	8.026	6.901	0.316	0.272	9.779	9.271	0.385	0.365	6.604	6.096	0.260	0.240
63	12mm	0.472	12.000	Metric	IS : 1363-67	13.100	11.570	0.516	0.456	19.000	18.480	0.748	0.727	8.450	7.550	0.333	0.297	10.450	9.550	0.411	0.376	7.450	6.550	0.293	0.258	
64					IS : 1363-84	12.700	11.30																			

Sr. No.	Basic Dia	Equivalent		Thread	Specification	S H A N K				A/F Of Bolts & Nuts				Bolt Head Thickness				Std. Nut Thickness				Lock Nut Thickness				
		Inch	Metric			Metric		Inch		Metric		Inch		Metric		Inch		Metric		Inch		Metric		Inch		
						Max	Min	Max	Min	Max	Min	Max	Min	Max	Min	Max	Min	Max	Min	Max	Min	Max	Min	Max	Min	
77	9/16"	0.562	14.290	BSW-BSF	BS : 916-57	15.037	—	0.592	—	23.368	22.860	0.920	0.900	10.287	9.525	0.405	0.375	13.462	12.700	0.530	0.500	8.458	8.204	0.333	0.323	
78					BS : 1083-65	14.275	14.173	0.562	0.558	23.368	23.165	0.920	0.912	9.525	9.271	0.375	0.365	12.700	12.446	0.500	0.490	8.458	8.204	0.333	0.323	
79					UNC-UNF	14.275	14.173	0.562	0.558	20.625	20.422	0.812	0.804	9.423	9.169	0.371	0.361	12.421	12.167	0.489	0.479	8.865	8.611	0.349	0.339	
80					ANSI	—	—	—	—	—	—	—	—	—	—	—	—	12.598	12.014	0.496	0.473	8.230	7.645	0.324	0.301	
81	5/8"	0.625	15.875	BSW-BSF	BS : 916-57	16.891	—	0.665	—	25.654	25.019	1.010	0.985	11.354	10.592	0.447	0.417	15.291	14.275	0.602	0.562	10.414	9.525	0.410	0.375	
82					BSW-BSF	BS : 1083-65	15.875	15.723	0.625	0.619	25.654	25.400	1.010	1.000	10.592	10.338	0.417	0.407	14.275	14.021	0.562	0.552	9.525	9.271	0.375	0.365
83					UNC-UNF	BS : 1768-63	15.875	15.723	0.625	0.619	23.800	23.597	0.937	0.929	10.236	9.982	0.403	0.393	14.021	13.767	0.552	0.542	9.652	9.398	0.380	0.370
84					ANSI	—	—	—	—	—	—	—	—	—	—	—	—	14.199	13.589	0.559	0.535	9.830	9.220	0.387	0.363	
85	16mm	0.630	16.000	Metric	IS : 1363 -67	17.100	15.570	0.673	0.613	24.000	23.160	0.945	0.912	10.450	9.550	0.411	0.376	13.550	12.450	0.533	0.490	8.450	7.550	0.333	0.297	
86					IS : 1363 -84	16.700	15.300	0.657	0.602	24.000	23.160	0.945	0.912	10.750	9.250	0.423	0.364	15.900	14.100	0.626	0.555	—	—	—	—	
87					IS : 1363 -92	16.700	15.300	0.657	0.602	24.000	23.160	0.945	0.912	10.750	9.250	0.423	0.364	15.900	14.100	0.626	0.555	—	—	—	—	
88	18mm	0.709	18.000	Metric	IS : 1364 -67	16.000	15.730	0.630	0.619	24.000	23.670	0.945	0.932	10.180	9.820	0.401	0.387	13.000	12.570	0.512	0.495	8.000	7.640	0.315	0.301	
89					IS : 1364 -83	16.000	15.730	0.630	0.619	24.000	23.670	0.945	0.932	10.180	9.820	0.401	0.387	14.800	14.100	0.583	0.555	8.000	7.420	0.315	0.292	
90					IS : 1364 -92	16.000	15.730	0.630	0.619	24.000	23.670	0.945	0.932	10.180	9.820	0.401	0.387	14.800	14.100	0.583	0.555	8.000	7.420	0.315	0.292	
91					IS : 1363 -67	19.100	17.570	0.752	0.692	27.000	26.160	1.063	1.030	12.550	11.450	0.494	0.451	15.550	14.450	0.612	0.569	9.450	8.550	0.372	0.337	
92	IS : 1363 -92	18.700	17.300	0.736	0.681	27.000	26.160	1.063	1.030	12.400	10.600	0.488	0.417	16.900	15.100	0.665	0.594	—	—	—	—					
93	IS : 1364 -67	18.000	17.730	0.709	0.698	27.000	26.670	1.063	1.050	12.220	11.780	0.481	0.464	15.000	14.570	0.590	0.574	9.000	8.640	0.354	0.340					
94	IS : 1364 -92	18.000	17.730	0.709	0.698	27.000	26.670	1.063	1.050	11.175	11.285	0.440	0.444	15.800	15.100	0.622	0.594	9.000	8.420	0.354	0.331					
95	3/4"	0.750	19.050	BSW-BSF	BS : 916-57	20.066	—	0.790	—	30.480	29.845	1.200	1.175	13.462	12.700	0.530	0.500	18.491	17.450	0.728	0.587	12.446	11.633	0.490	0.458	
96					BSW-BSF	BS : 1083-65	19.050	18.898	0.750	0.744	30.480	30.226	1.200	1.190	12.700	12.192	0.500	0.480	17.450	17.196	0.687	0.677	11.633	11.379	0.458	0.448
97					UNC-UNF	BS : 1768-63	19.050	18.898	0.750	0.744	28.575	28.321	1.125	1.115	12.268	11.760	0.483	0.463	16.535	16.027	0.651	0.631	10.973	10.465	0.432	0.412
98					ANSI	—	—	—	—	—	—	—	—	—	—	—	—	16.891	15.672	0.665	0.617	11.328	10.109	0.446	0.398	
99	20mm	0.787	20.000	Metric	IS : 1363 -67	21.300	19.480	0.838	0.767	30.000	29.160	1.181	1.148	13.550	12.450	0.533	0.490	16.550	15.450	0.651	0.608	9.450	8.550	0.372	0.337	
100					IS : 1363 -84	20.840	19.160	0.820	0.754	30.000	29.160	1.181	1.148	13.400	11.600	0.527	0.457	18.700	16.600	0.736	0.653	—	—	—	—	
101					IS : 1363 -92	20.840	19.160	0.820	0.754	30.000	29.160	1.181	1.148	13.400	11.600	0.528	0.457	19.000	16.900	0.748	0.665	—	—	—	—	
102	18mm	0.709	18.000	Metric	IS : 1364 -67	20.000	19.670	0.787	0.774	30.000	29.160	1.181	1.148	13.350	12.650	0.525	0.498	16.000	14.900	0.630	0.587	9.000	8.100	0.354	0.319	
103					IS : 1364 -83	20.000	19.670	0.787	0.774	30.000	29.670	1.181	1.168	12.720	12.280	0.501	0.483	18.000	16.900	0.709	0.665	10.000	9.100	0.394	0.358	
104					IS : 1364 -92	20.000	19.670	0.787	0.774	30.000	29.670	1.181	1.168	12.715	12.285	0.501	0.484	18.000	16.900	0.709	0.665	10.000	9.100	0.394	0.358	
105					IS : 1363 -67	23.300	21.480	0.917	0.846	32.000	31.000	1.260	1.220	14.550	13.450	0.573	0.529	18.550	17.450	0.730	0.687	10.450	9.550	0.411	0.376	
106	IS : 1363 -92	22.840	21.160	0.899	0.833	34.000	33.000	1.339	1.299	14.900	13.100	0.587	0.516	20.200	18.100	0.795	0.713	—	—	—	—					
107	IS : 1364 -67	22.000	21.670	0.866	0.853	32.000	31.000	1.260	1.220	14.350	13.650	0.565	0.537	18.000	16.900	0.709	0.665	10.000	9.100	0.394	0.358					
108	IS : 1364 -92	22.000	21.670	0.866	0.853	34.000	33.380	1.339	1.314	14.215	13.785	0.560	0.543	19.400	18.100	0.764	0.713	11.000	9.900	0.433	0.390					
109	7/8"	0.875	22.225	BSW-BSF	BS : 916-57	23.241	—	0.915	—	33.020	32.258	1.300	1.270	15.825	14.808	0.623	0.583	20.574	19.050	0.810	0.750	13.970	12.700	0.550	0.500	
110					BSW-BSF	BS : 1083-65	22.225	22.022	0.875	0.867	33.020	32.715	1.300	1.288	14.808	14.300	0.583	0.563	19.050	18.796	0.750	0.740	12.700	12.446	0.500	0.490
111					UNC-UNF	BS : 1768-63	22.225	22.022	0.875	0.867	33.325	33.020	1.312	1.300	14.300	13.792	0.563	0.543	19.304	18.796	0.760	0.740	12.548	12.040	0.494	0.474
112					ANSI	—	—	—	—	—	—	—	—	—	—	—	—	19.710	18.390	0.776	0.724	12.954	11.633	0.510	0.458	
113	24mm	0.945	24.000	Metric	IS : 1363 -67	25.300	23.480	0.996	0.924	36.000	35.000	1.417	1.378	15.550	14.450	0.612	0.569	19.650	18.350	0.774	0.722	10.450	9.550	0.411	0.376	
114					IS : 1363 -84	24.840	23.160	0.978	0.912	36.000	35.000	1.417	1.378	15.900	14.100	0.626	0.555	22.300	20.200	0.878	0.795	—	—	—	—	
115					IS : 1363 -92	24.840	23.160	0.978	0.912	36.000	35.000	1.417	1.378	15.900	14.100	0.626	0.555	22.300	20.200	0.878	0.795	—	—	—	—	
116	18mm	0.709	18.000	Metric	IS : 1364 -67	24.000	23.670	0.945	0.932	36.000	35.000	1.417	1.378	15.350	14.650	0.604	0.577	19.000	17.700	0.748	0.697	10.000	9.100	0.394	0.358	
117					IS : 1364 -84	24.000	23.670	0.945	0.932	36.000	35.380	1.417	1.393	15.220	14.780	0.599	0.582	21.500	20.200	0.846	0.795	12.000	10.900	0.472	0.429	
118					IS : 1364 -92	24.000	23.670	0.945	0.932	36.000	35.380	1.417	1.393	15.215	14.785	0.599	0.582	21.500	20.200	0.846	0.795	12.000	10.900	0.472	0.429	
119	1"	1.000	25.400	BSW-BSF	BS : 916-57	26.416	—	1.040	—	37.592	36.830	1.480	1.450	17.932	16.916	0.706	0.666	23.749	22.225	0.935	0.875	16.002	14.808	0.630	0.583	
120					BSW-BSF	BS : 1083-65	25.400	25.197	1.000	0.992	37.592	37.287	1.480	1.468	16.916	16.154	0.666	0.636	22.225	21.971	0.875	0.865	14.808	14.554	0.583	0.573
121					UNC-UNF	BS : 1768-63	25.400	25.197	1.000	0.992	38.100	37.795	1.500	1.488	15.926	15.164	0.627	0.597	22.200	21.438	0.874	0.844	14.275	13.513	0.562	0.532

Sr. No.	Basic Dia	Equivalent		Thread	Specification	S H A N K				A/F Of Bolts & Nuts				Bolt Head Thickness				Std. Nut Thickness				Lock Nut Thickness					
		Inch	Metric			Metric		Inch		Metric		Inch		Metric		Inch		Metric		Inch		Metric		Inch			
						Max	Min	Max	Min	Max	Min	Max	Min	Max	Min	Max	Min	Max	Min	Max	Min	Max	Min	Max	Min		
131	30mm	1.181	30.000	Metric	IS : 1363 -67	31.300	29.480	1.232	1.161	46.000	45.000	1.811	1.772	19.650	18.350	0.774	0.722	26.650	23.350	0.970	0.919	12.550	11.450	0.494	0.451		
132					IS : 1363 -84	30.840	29.160	1.214	1.148	46.000	45.000	1.811	1.772	19.750	17.650	0.777	0.695	26.400	24.300	1.039	0.957	—	—	—	—	—	—
133					IS : 1363 -92	30.840	29.160	1.214	1.148	46.000	45.000	1.811	1.772	19.750	17.650	0.778	0.695	26.400	24.300	1.039	0.957	—	—	—	—	—	—
134				Metric	IS : 1364 -67	30.000	29.670	1.181	1.168	46.000	45.000	1.811	1.772	19.420	18.580	0.764	0.731	24.000	22.700	0.945	0.894	12.000	10.900	0.472	0.429		
135					IS : 1364 -83	30.000	29.670	1.181	1.168	46.000	45.000	1.811	1.772	19.120	18.280	0.753	0.718	25.600	24.300	1.008	0.957	15.000	13.900	0.590	0.547		
136					IS : 1364 -92	30.000	29.480	1.181	1.161	46.000	45.000	1.811	1.772	19.120	18.280	0.753	0.720	25.600	24.300	1.008	0.957	15.000	13.900	0.590	0.547		
137	1.1/4"	1.250	31.750	BSW-BSF	BS : 916-57	33.020	—	1.300	—	47.224	46.101	1.860	1.815	22.606	21.082	0.890	0.830	30.607	28.575	1.205	1.125	20.574	19.050	0.810	0.750		
138					BS : 1083-65	31.750	31.547	1.250	1.242	47.244	46.101	1.860	1.815	21.082	20.066	0.830	0.790	28.575	28.067	1.125	1.105	19.050	18.542	0.750	0.730		
139					BS : 1768-63	31.750	31.547	1.250	1.242	47.625	46.482	1.875	1.830	20.650	19.634	0.813	0.773	27.610	26.340	1.087	1.037	18.898	17.628	0.744	0.694		
140					UNC-UNF	ANSI	32.436	—	1.277	—	47.625	46.025	1.875	1.812	22.250	19.025	0.876	0.749	27.788	26.162	1.094	1.030	19.075	17.450	0.751	0.687	
141	33mm	1.299	33.000	Metric	IS : 1363 -67	34.000	32.380	1.362	1.275	50.000	49.000	1.968	1.929	21.650	20.350	0.852	0.801	26.650	25.350	1.049	0.998	14.550	13.450	0.573	0.529		
142					IS : 1363 -92	34.000	32.000	1.339	1.260	50.000	49.000	1.969	1.929	22.050	19.950	0.868	0.785	29.500	27.400	1.161	1.079	—	—	—	—		
143					IS : 1364 -67	33.000	32.610	1.300	1.284	50.000	49.000	1.968	1.929	21.420	20.580	0.843	0.810	26.000	24.700	1.024	0.972	14.000	12.900	0.551	0.508		
144					IS : 1364 -92	33.000	32.380	1.299	1.275	50.000	49.000	1.969	1.929	21.420	20.580	0.843	0.810	28.700	27.400	1.130	1.079	16.500	15.400	0.650	0.606		
145	1.3/8"	1.375	34.925	BSW-BSF	BS : 916-57	36.195	—	1.425	—	52.070	50.927	2.050	2.005	24.892	23.368	0.980	0.920	33.782	31.750	1.330	1.250	22.606	21.158	0.890	0.833		
146					BS : 1083-65	34.925	34.671	1.375	1.365	52.070	50.927	2.050	2.005	23.368	22.352	0.920	0.880	31.750	31.242	1.250	1.230	21.158	20.650	0.833	0.813		
147					BS : 1768-63	34.925	34.671	1.375	1.365	52.375	51.232	2.062	2.017	23.301	21.285	0.878	0.838	30.404	29.134	1.197	1.147	20.472	19.202	0.806	0.756		
148					UNC-UNF	ANSI	35.662	—	1.404	—	52.375	50.648	2.062	1.994	23.876	20.574	0.940	0.810	30.632	28.905	1.206	1.138	20.701	18.974	0.815	0.747	
149	36mm	1.417	36.000	Metric	IS : 1363 -67	37.600	35.380	1.480	1.393	55.000	53.800	2.165	2.118	23.650	22.350	0.931	0.880	29.650	28.350	1.167	1.116	14.550	13.450	0.573	0.529		
150					IS : 1363 -84	37.000	35.000	1.457	1.378	55.000	53.800	2.165	2.118	23.550	21.450	0.927	0.844	31.500	29.400	1.240	1.157	—	—	—	—		
151					IS : 1363 -92	37.000	35.000	1.457	1.378	55.000	53.800	2.165	2.118	23.550	21.450	0.927	0.844	31.500	29.000	1.240	1.142	—	—	—	—		
152				Metric	IS : 1364 -67	36.000	35.610	1.417	1.402	55.000	53.800	2.165	2.118	23.420	22.580	0.922	0.889	29.000	27.700	1.142	1.090	14.000	12.900	0.551	0.508		
153					IS : 1364 -83	36.000	35.610	1.417	1.402	55.000	53.800	2.165	2.118	22.920	22.080	0.902	0.869	31.000	29.400	1.220	1.157	18.000	16.900	0.709	0.665		
154					IS : 1364 -92	36.000	35.380	1.417	1.393	55.000	53.800	2.165	2.118	22.920	22.080	0.902	0.869	31.000	29.400	1.220	1.157	18.000	16.900	0.709	0.665		
155					1.1/2"	1.500	38.100	BSW-BSF	BS : 916-57	39.370	—	1.550	—	56.388	55.245	2.220	2.175	26.924	25.400	1.060	1.000	36.957	34.925	1.455	1.375	24.892	23.266
156	BS : 1083-65	38.100	34.846	1.500					1.490	56.388	55.245	2.220	2.175	25.400	24.384	1.000	0.960	34.925	34.417	1.375	1.355	23.266	22.758	0.916	0.896		
157	BS : 1768-63	38.100	37.846	1.500					1.490	57.150	56.007	2.250	2.205	24.740	23.724	0.974	0.934	33.299	31.775	1.311	1.251	22.200	20.676	0.874	0.814		
158	UNC-UNF	ANSI	38.887	—					1.531	—	57.150	55.245	2.250	2.175	26.134	22.911	1.036	0.902	33.452	31.623	1.317	1.245	23.352	20.523	0.880	0.808	

www.applebolts.com

Sr. No.	Basic Dia	Equivalent		Thread	Specification	S H A N K				A/F Of Bolts & Nuts				Bolt Head Thickness				Std. Nut Thickness				Lock Nut Thickness			
		Inch	Metric			Metric		Inch		Metric		Inch		Metric		Inch		Metric		Inch		Metric		Inch	
						Max	Min	Max	Min	Max	Min	Max	Min	Max	Min	Max	Min	Max	Min	Max	Min	Max	Min	Max	Min
159	39mm	1.535	39.000	Metric	IS : 1363 -67	—	38.380	1.598	1.511	60.000	58.800	2.362	2.315	25.650	24.350	1.010	0.959	31.800	30.200	1.252	1.189	16.550	15.450	0.651	0.608
160					IS : 1363 -92	40.600	38.000	1.575	1.496	60.000	58.800	2.362	2.315	26.050	23.950	1.026	0.943	34.300	31.800	1.350	1.252	—	—	—	—
161					IS : 1364 -67	40.000	38.610	1.535	1.520	60.000	58.800	2.362	2.315	25.420	24.580	1.001	0.968	31.000	29.400	1.220	1.157	16.000	14.900	0.630	0.587
162				Metric	IS : 1364 -92	39.000	38.380	1.535	1.511	60.000	58.800	2.362	2.315	25.420	24.580	1.001	0.968	33.400	31.800	1.315	1.252	19.500	18.200	0.768	0.717
163					IS : 1363 -92	—	41.000	1.693	1.614	65.000	63.100	2.559	2.484	27.050	24.950	1.065	0.982	34.900	32.400	1.374	1.276	—	—	—	—
164					IS : 1364 -92	43.000	41.380	1.654	1.629	65.000	63.100	2.559	2.484	26.420	25.580	1.040	1.007	34.000	32.400	1.339	1.276	21.000	19.700	0.827	0.776
165	1.3/4"	1.750	44.450	BSW-BSF	BS : 916-57	—	—	1.810	—	65.532	64.008	2.580	2.520	32.258	29.718	1.270	1.170	43.815	41.275	1.725	1.625	29.464	27.508	1.160	1.083
166					BS : 1083-65	45.974	44.196	1.750	1.740	65.532	64.008	2.580	2.520	29.718	28.194	1.170	1.110	41.275	40.767	1.625	1.605	27.508	27.008	1.083	1.063
167					BS : 1768-63	44.450	44.196	1.750	1.740	66.675	65.151	2.265	2.565	28.804	27.280	1.134	1.074	38.862	37.338	1.530	1.470	25.375	23.851	0.999	0.939
168					UNC-UNF	ANSI	44.450	—	1.785	—	66.675	64.465	2.625	2.538	30.378	26.772	1.196	1.054	—	—	—	—	—	—	—
169	45mm	1.771	45.000	Metric	IS : 1363 -92	—	44.000	1.811	1.732	70.000	68.100	2.756	2.681	29.050	26.950	1.144	1.061	36.900	34.400	1.453	1.354	—	—	—	—
170					IS : 1364 -92	46.000	44.380	1.772	1.747	70.000	68.100	2.756	2.681	28.420	27.580	1.119	1.086	36.000	34.400	1.417	1.354	22.500	21.200	0.886	0.835
171	48mm	1.890	48.000	Metric	IS : 1363 -92	—	47.000	1.929	1.850	75.000	73.100	2.953	2.878	31.050	28.950	1.222	1.140	38.900	36.400	1.531	1.433	—	—	—	—
172					IS : 1364 -92	49.000	47.380	1.890	1.865	75.000	73.100	2.953	2.878	30.420	29.580	1.198	1.165	38.000	36.400	1.496	1.433	24.000	22.700	0.945	0.894
173	2"																								



Apple Bolts

Manufacturers & Traders

Vishwakarma Street, Gill Road, Ludhiana - 141003, (Punjab) India.
 Tel.: +91-161-5050110, Call.: +91-93177- 88888 +91-90234- 55555
 E-mail.: applebolts@in.com, applebolts.com@gmail.com
 Website.: www.applebolts.com

THREADING LENGTH

Different specification have different thread length. We cover all the details together for easy reference.

1. Standard Hex Bolt to IS: 1363,1364,BS:4190,Din:601.From 5mm to 36mm dia size.

- i) Bolt length upto 125mm : double the dia + 6mm
- ii) from 125 to 200mm : double the dia + 12mm
- iii) above 200mm : double the dia + 25mm

2. Metric Hex Bolts for Steel structure to IS:6639 - 72, IS:12427-88, DIN:7990

This specification has fixed thread length for each dia. As follows: (Except thread length difference, all other dimension of Bolts are as per IS:1363)

Dia	12mm	16mm	20mm	22mm	24mm	27mm	30mm	33mm	36mm	39mm
T.L.	20	23	26	28	30	33	35	38	40	43

3. BSW-BSF Hex Bolts to BS:916

Length of Bolts	All diameters upto & including 1/2" & all drilled bolts	All dia over 1/2"
upto / including 4"	2" x dia	1.1/2" x dia
over 4" upto/including 8"	2" x dia	2" x dia
over 8"	2.1/2" x dia	2.1/2" x dia

3a. Bolts faced under the head with or without turning on the shank

Length of Bolt	All diameters
All Lengths	2" x dia

Bolts that are too short for minimum thread length shall be threaded as screws.

4. BSW-BSF Precision Hex Bolts to BS:1083-65

All dia and length : Minimum double the dia

5. UNC-UNF Bolts to BS:1768-63

- Bolt length upto/including 6" Double the dia + 1/4"
- Bolt length over 6" Double the dia + 1/2"

www.applebolts.com

Applications



Apple Bolts

Vishwakarma Street, Gill Road, Ludhiana - 141003, (Punjab) India.

Tel.: +91-161-5050110, Call.: +91-93177- 88888 +91-90234- 55555

E-mail.: applebolts@in.com, applebolts.com@gmail.com

Website.: www.applebolts.com